

# Educational Programs Update Questions and Answers (hopefully)

September 21, 2017

# California Guided Pathways (CAGP)



- 20 CA Community Colleges
- Based on best practices at National level
- Applied and Accepted
- Training, support and professional development
- 6 Institutes
  - 1. Leadership for Transformational Change
  - 2. Mapping Pathways through the Institution
  - 3. Pathways to Transfer and Employment
  - 4. Redesigning Student Intake and Ongoing Student Support
  - 5. Redesigning Basic Skills as an Onramp to Pathways
  - 6. Ensuring Students are Learning and Progressing along the Pathway

# Core Team

- Anthony Beebe, President
- Priscilla Butler, Academic Senate President
- Jamie Campbell, Math Department Chair
- Paul Jarrell, Executive Vice President
- Luz Reyes-Martin, Executive Director of Public Affairs and Communications
- Gwyer Schuyler, Academic Counseling Chair

# Core Beliefs (Pillars)

- Clarify the Path
- Enter the Path
- Stay on the Path
- Ensure Learning

# Timeline

- 2017-2018: Planning Year
  - Leadership Teams
  - Spring 2018 In-service
  - Meta-majors/Areas of Interests
- 2018-2019: Piloting and Initial Assessment
- 2019-2020: Further Implementation and Scale

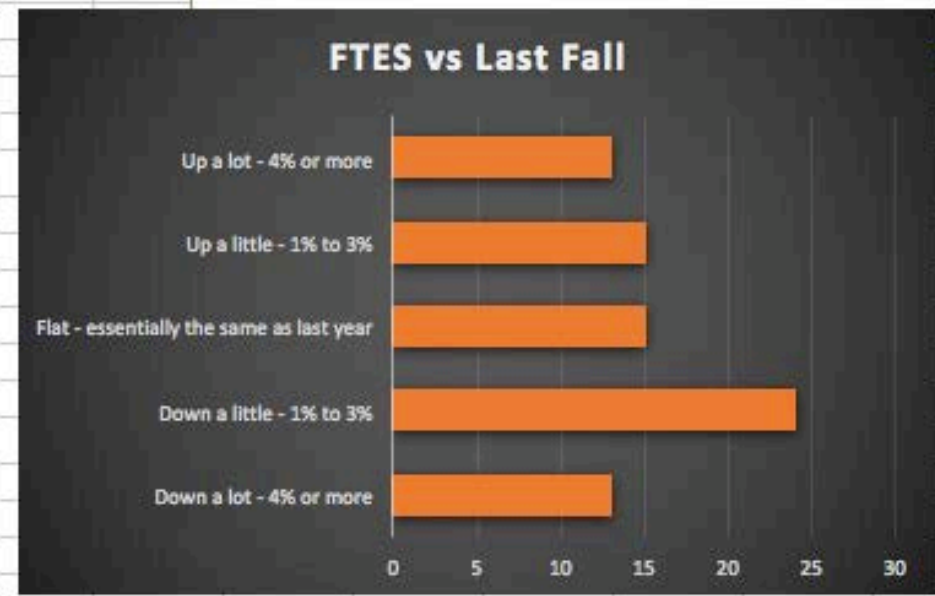
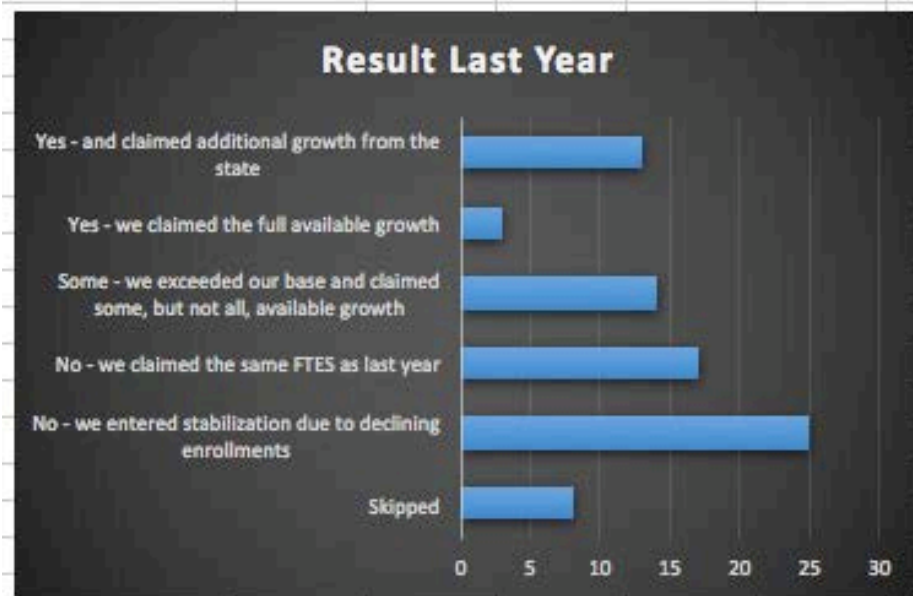
# Budget Update

- FCMAT
  - Benchmark Study
  - Highlights expenditures related to Human Resources
  - Encourage a strong look at employee costs
- Workforce Reduction Attrition Plan
  - WRAP Committee reviews requests (October 2 and
  - WRAP recommendations to CPC for hires
  - Re-organization/reallocation of workforce
- Goal: Workforce reduction, reallocation, efficiency to balance budget by 2020.

# Enrollment Update

- Residents
  - Headcount: -4%
  - Units: -2.3%
- Non-residents
  - Headcount: -11%
  - Units: -11%
- Overall
  - Headcount: -5%
  - Units: -3.8%
- Late start classes
  - Strong enrollment

# Across the State

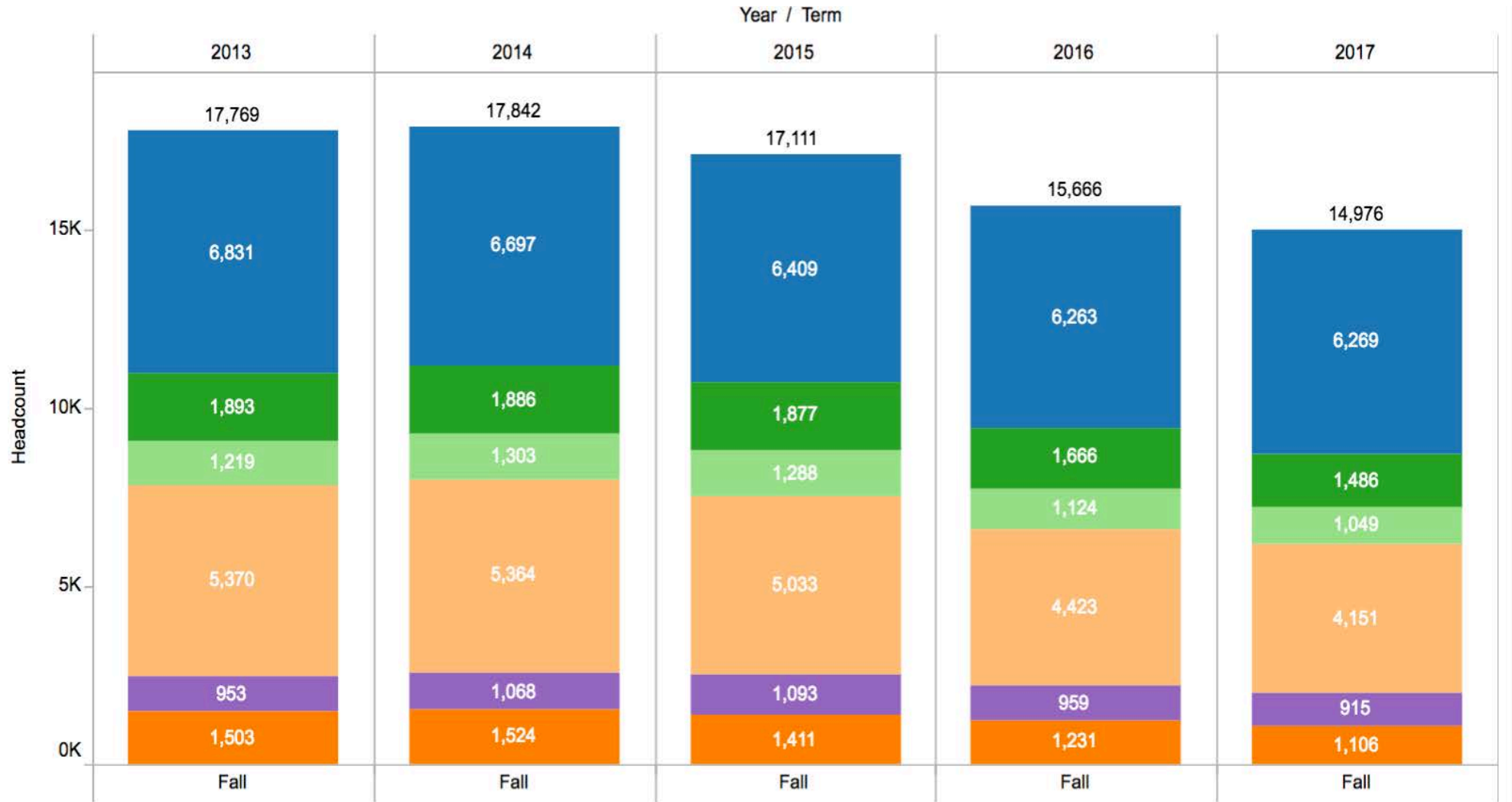




# Residency – Excluding Dual Enrollment

## Bars Are Colored By:

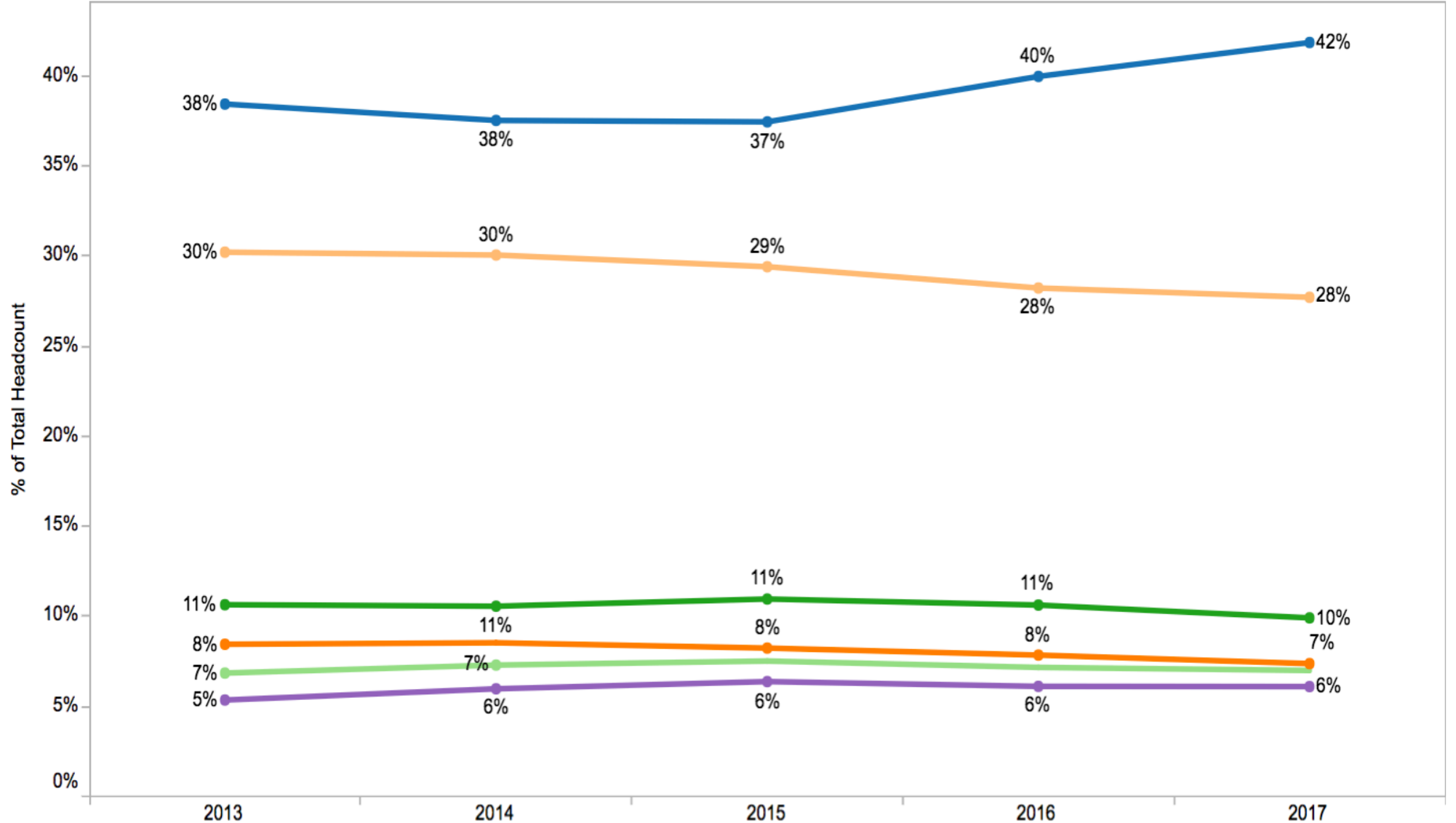
- In District
- SB County
- Tri-Counties
- Other CA
- Out of State
- International



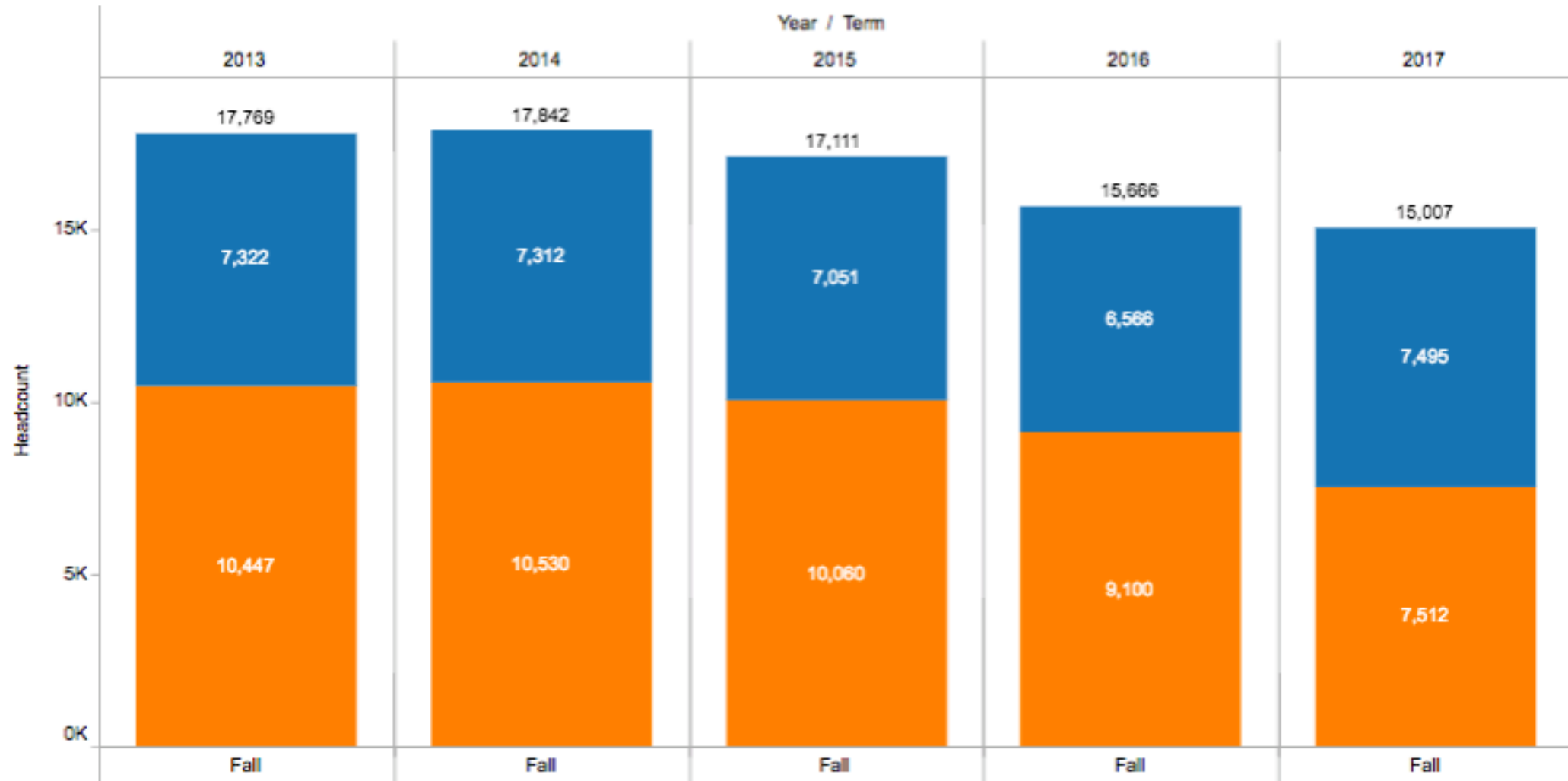
# Residency— Excluding Dual Enrollment

Bars Are Colored By:

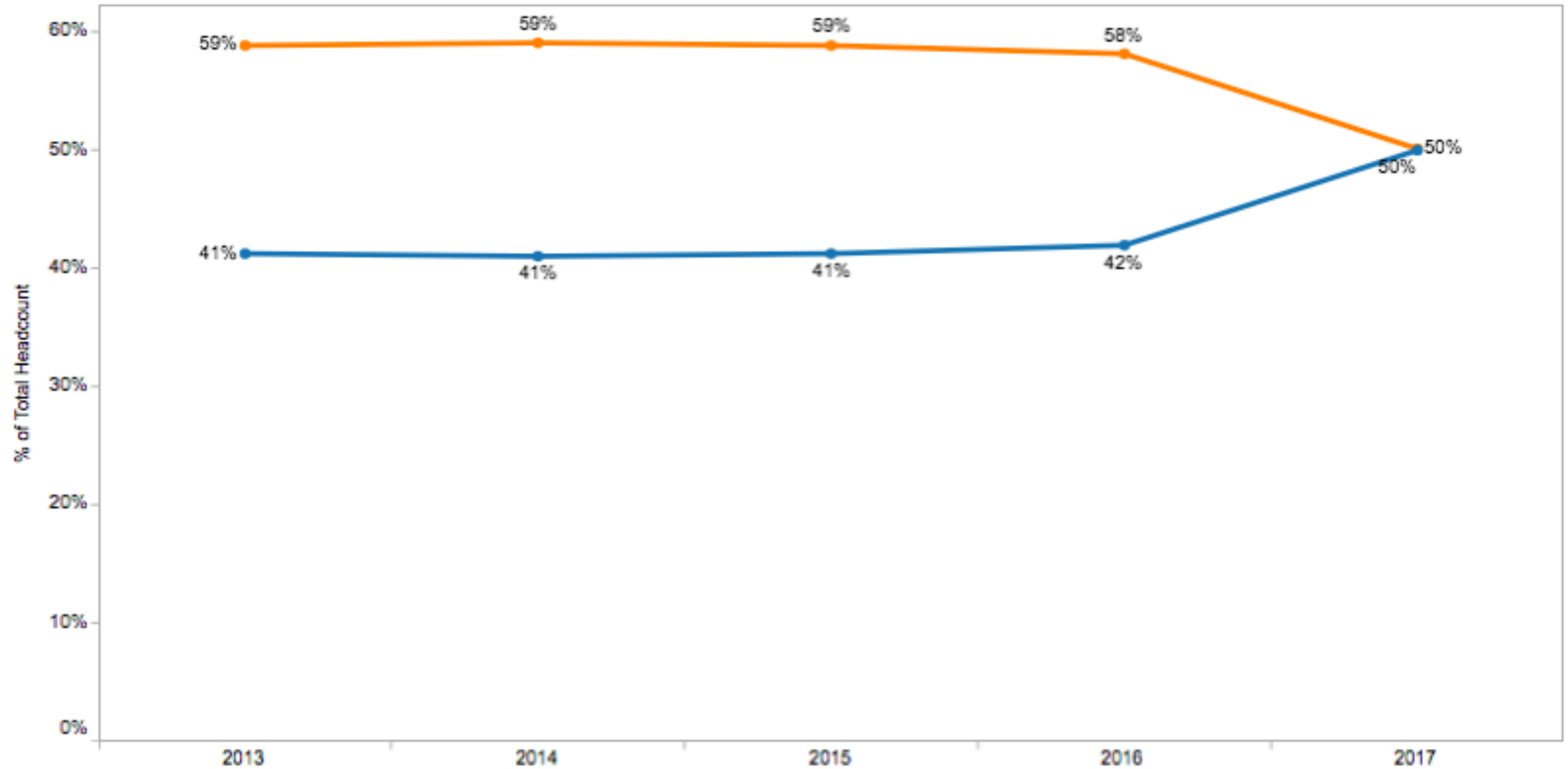
- In District
- SB County
- Tri-Counties
- Other CA
- Out of State
- International



# Registration Status-excluding Dual Enrollment



# Registration Status-excluding Dual Enrollment



Questions....